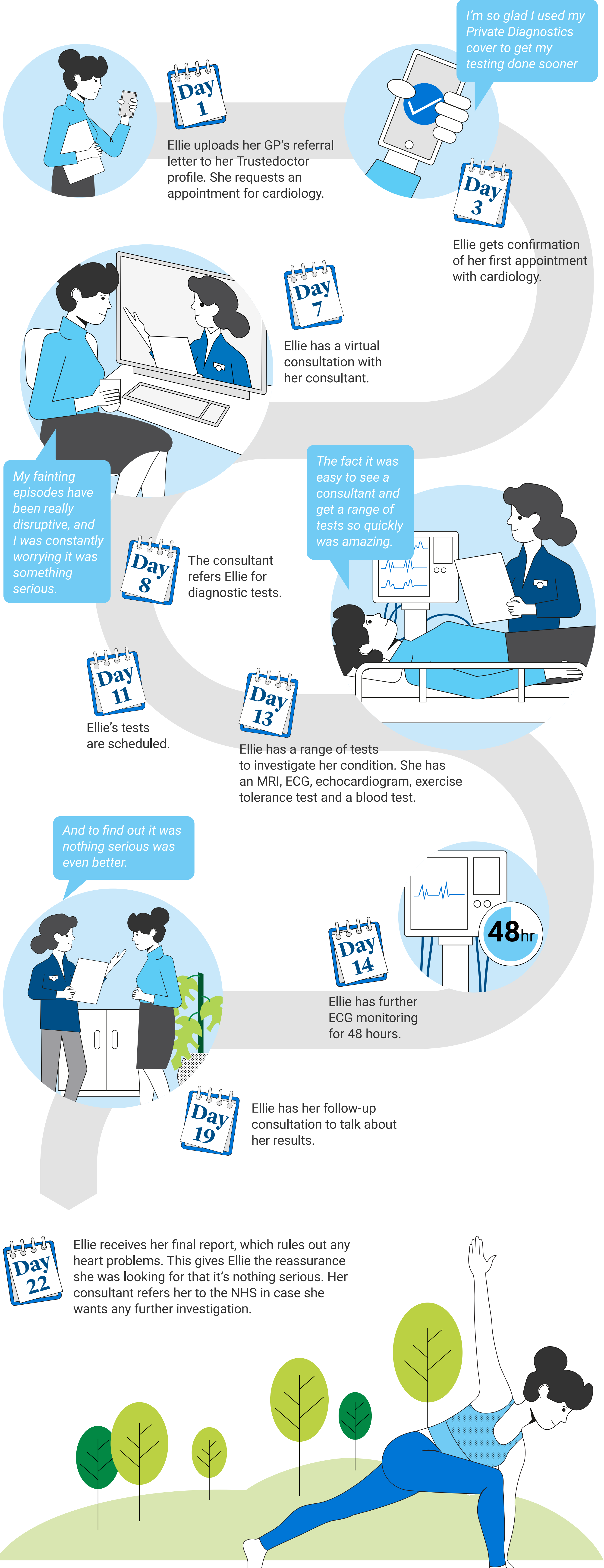


# Fast access to medical tests and results

## How our Private Diagnostics service works

Ellie, who is 33, saw her GP about recurring fainting episodes. Her doctor said the next step would be to see a cardiologist and a neurologist for further tests. Ellie was worried it was something serious, and felt anxious about having to wait a while for an appointment. So, she decided to use her Private Diagnostics cover to get her results sooner.



**When taking out cover, Private Diagnostics can be added to your client's Life Insurance, Critical Illness, Income Protection and Rental Protection policies for £4.50 a month.**

**Visit [legalandgeneral.com/private-diagnostics](https://legalandgeneral.com/private-diagnostics)**

Private Diagnostics is insured by AXIS Specialty London. The support and services are provided by Trustedoctor, a sister company of Further Underwriting International SLU.

Days represent labour days.

Ellie's story is real, but details of the story and names have been changed to protect the customer's identity.